

MM730100E

MALHAM BATTERY OPERATED ILLUMINATED MIRROR



MATERIAL

Anodised aluminium frame
Mirrored glass

FINISH / COLOUR

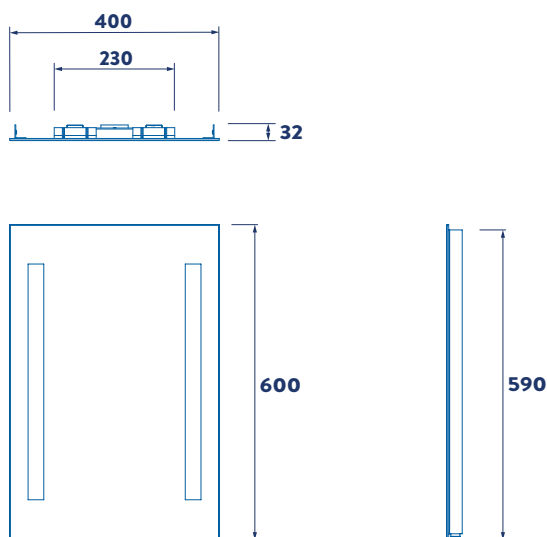
Satin anodised frame

FREQUENTLY USED APPLICATIONS

Commercial washrooms
Hotels
Domestic dwellings
Care homes

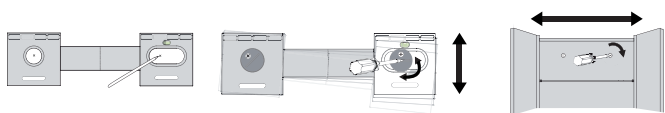
FEATURES

Patented Hang 'N' Lock system for easy installation.
Two Energy-efficient LED strip lights.
Touch-sensitive battery powered switch.
Can be hung portrait only.
4mm thick bevelled edge mirror glass with edge sealing.
IP44 rated, suitable for use in the bathroom outside zone.
Requires 8x AA batteries (not provided).



HANG 'N' LOCK

Easy Mounting Bracket.
Fully Adjustable For Levelling & Centering.
One Person Mounting.



For dated references, only the edition cited applies. For undated references, the latest edition of the referenced document (including any amendments) applies.

Printed material, designs and packaging are protected by copyright and design right.

Tel: +44 (0) 1264 365881
Fax: +44 (0) 1264 356437

Email: info@croydex.co.uk
Web: www.croydex.com

Date Created : 18/07/19
REV 001

MM730100E

MALHAM BATTERY OPERATED ILLUMINATED MIRROR



PERFORMANCE STANDARDS

8 x AA 1.5 Vdc BATTERIES.

Corrosion Resistance: Minimum Grade 9 when assessed using BS EN ISO 10289 after 48 hours BS EN ISO 9227 Neutral Salt Spray (NSS) test.

Complies with the Electromagnetic Compatibility (EMC) Directive (recast) 2014/30/EU (BS EN 62471; BS EN 62493; BS EN 55015; BS EN 61547).

Complies with the Restriction of Hazardous Substances (RoHS) Directive (recast) 2011/65/EU.

CARE AND MAINTENANCE

Clean surfaces with a damp cloth and wipe dry using a soft cloth.

Do not use chemical or abrasive cleaners as these may damage the surface finish, particularly along the edge of the mirror glass.

GUARANTEE / WARRANTY

Consumer Statutory Rights Apply

For dated references, only the edition cited applies. For undated references, the latest edition of the referenced document (including any amendments) applies.

Printed material, designs and packaging are protected by copyright and design right.

Tel: +44 (0) 1264 365881
Fax: +44 (0) 1264 356437

Email: info@croydex.co.uk
Web: www.croydex.com

Date Created : 18/07/19
REV 001